

5 Perennial Place

The Botanic Silverdale

2 BEDROOM VILLA

The Villas are spaciouly designed to create a modern, natural environment full of light and colour. The designer kitchen and open plan living area are perfect for entertaining while the stacked sliding doors provide a seamless transition to the generous outdoor area. A low maintenance, luxurious lifestyle.

2 Bedrooms | 2 Bathrooms

VILLA SIZE		
Living	Patio	Total
116m ²	49m ²	165m ²

- Secure keyless entry
- Wireless connectivity
- MY LUMIN communications platform
- MY LUMIN duress call management 24/7
- Modern open plan Living
- Expansive outdoor living
- Master suite with high quality walk in wardrobe
- Fully tiled ensuite with underfloor heating
- Quality Fisher & Paykel appliances as standard
- Quality finishes including engineered kitchen benchtops
- Centrally located heat pump
- Includes window drapes
- Secure internal access garage

THE BOTANIC

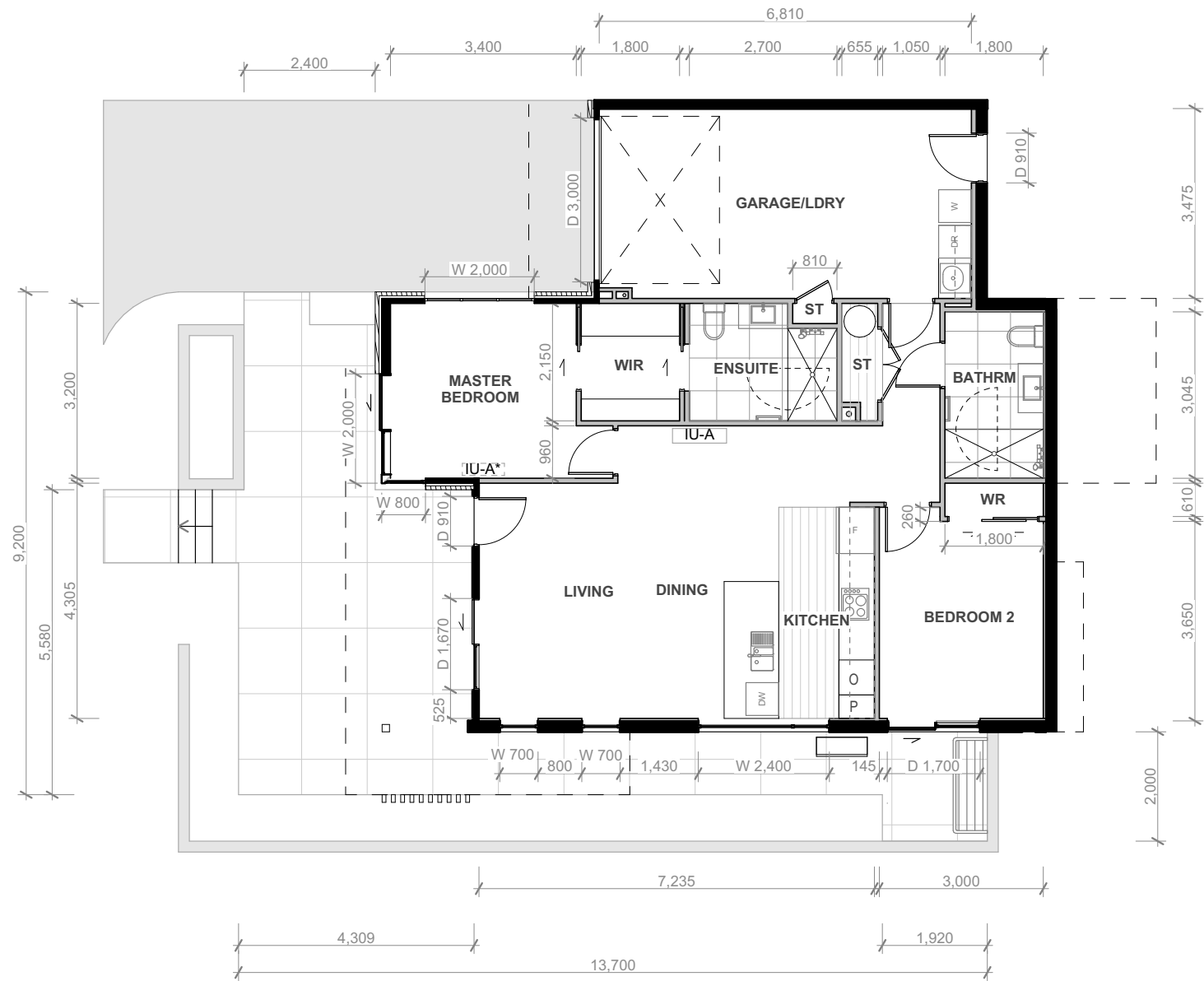
SILVERDALE



*Landscaping indicative

0508 268 264 (0508 BOTANIC) | hello@thebotanic.co.nz | thebotanic.co.nz

An aerial photograph of the proposed development site. The site is bounded by Hydrangea Crescent to the north, a river to the west, and a large green area to the south. The layout shows several streets: Pukunui Place, Perennial Place, Lily Place, and Stage Close. The new residential units are shown in yellow, and the existing units are in grey. A parking area is located at the top of the site. A large green area is visible at the bottom right of the site.



*Dimensions indicative

