

5 Sage Close The Botanic Silverdale

2 BEDROOM VILLA

The Villas are spaciouly designed to create a modern, natural environment full of light and colour. The designer kitchen and open plan living area are perfect for entertaining while the stacked sliding doors provide a seamless transition to the generous outdoor area. A low maintenance, luxurious lifestyle.

2 Bedrooms | 2 Bathrooms

VILLA SIZE		
Living	Patio	Total
134m ²	32m ²	166m ²

- Secure keyless entry
- Wireless connectivity
- MY LUMIN communications platform
- MY LUMIN duress call management 24/7
- Modern open plan living
- Expansive outdoor living
- Master suite with high quality walk in wardrobe
- Fully tiled ensuite with underfloor heating
- Quality Fisher & Paykel appliances as standard
- Quality finishes including engineered kitchen benchtops
- Centrally located heat pump
- Includes window drapes
- Secure internal access garage

THE BOTANIC

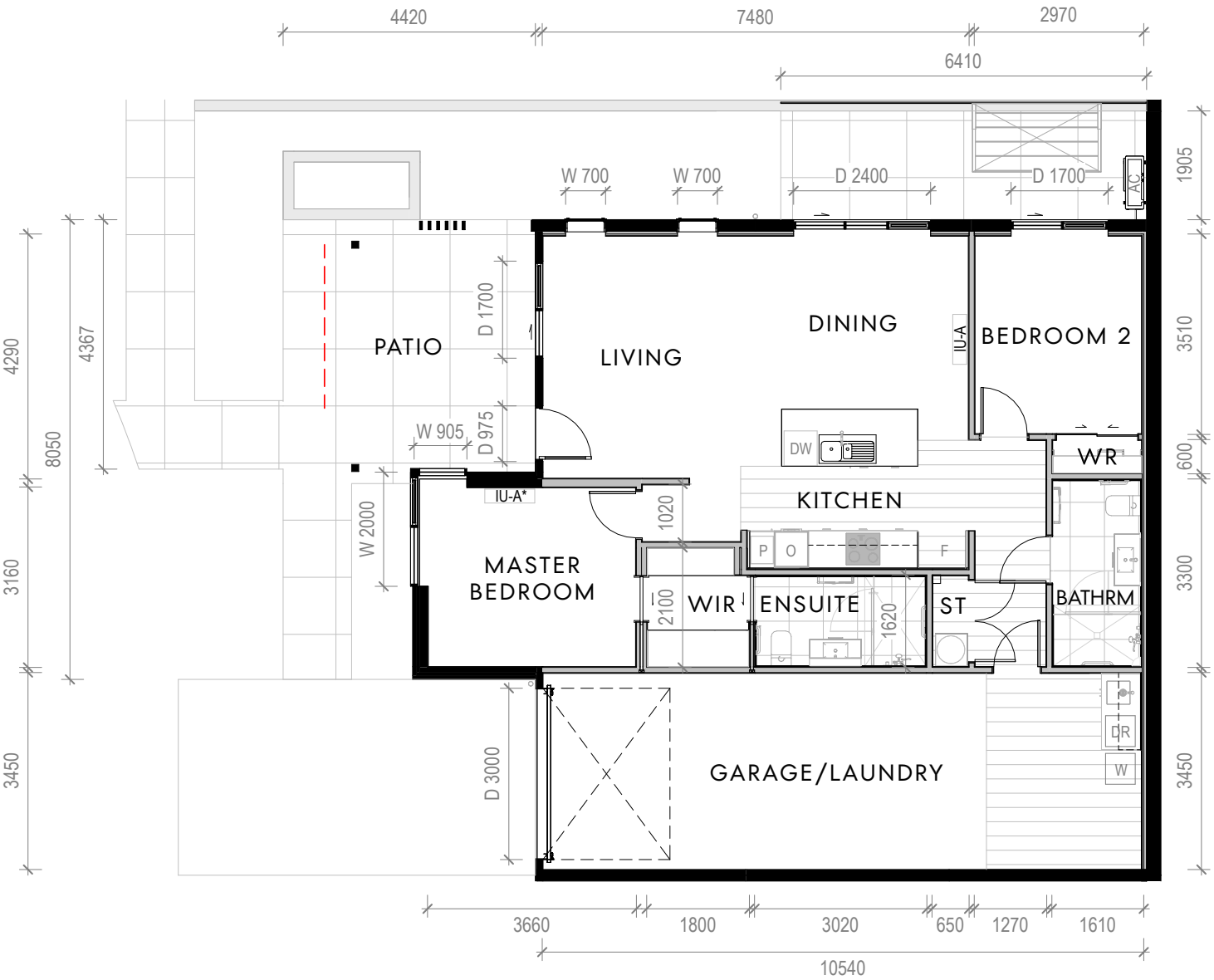
SILVERDALE



*Landscaping is indicative

0508 268 264 (0508 BOTANIC) | hello@thebotanic.co.nz | thebotanic.co.nz

YOUR VILLA IS HERE



--- Extent of optional drop-down exterior blind.

A3 Scale – 1:100
*Dimensions indicative