

# Unit 101, Rimu Apartments 57 Evergreen Drive, The Botanic Silverdale

## 3 BEDROOM APARTMENT

The Rimu Apartments are spaciouly designed to create a modern, natural environment full of light and colour. The designer kitchen and open plan living area are perfect for entertaining while the stacked sliding doors provide a seamless transition to the generous outdoor patio area. A low maintenance, luxurious lifestyle.

3 Bedrooms | 2 Bathrooms

APARTMENT SIZE		
Living	Balcony	Total
116m <sup>2</sup>	18m <sup>2</sup>	134m <sup>2</sup>

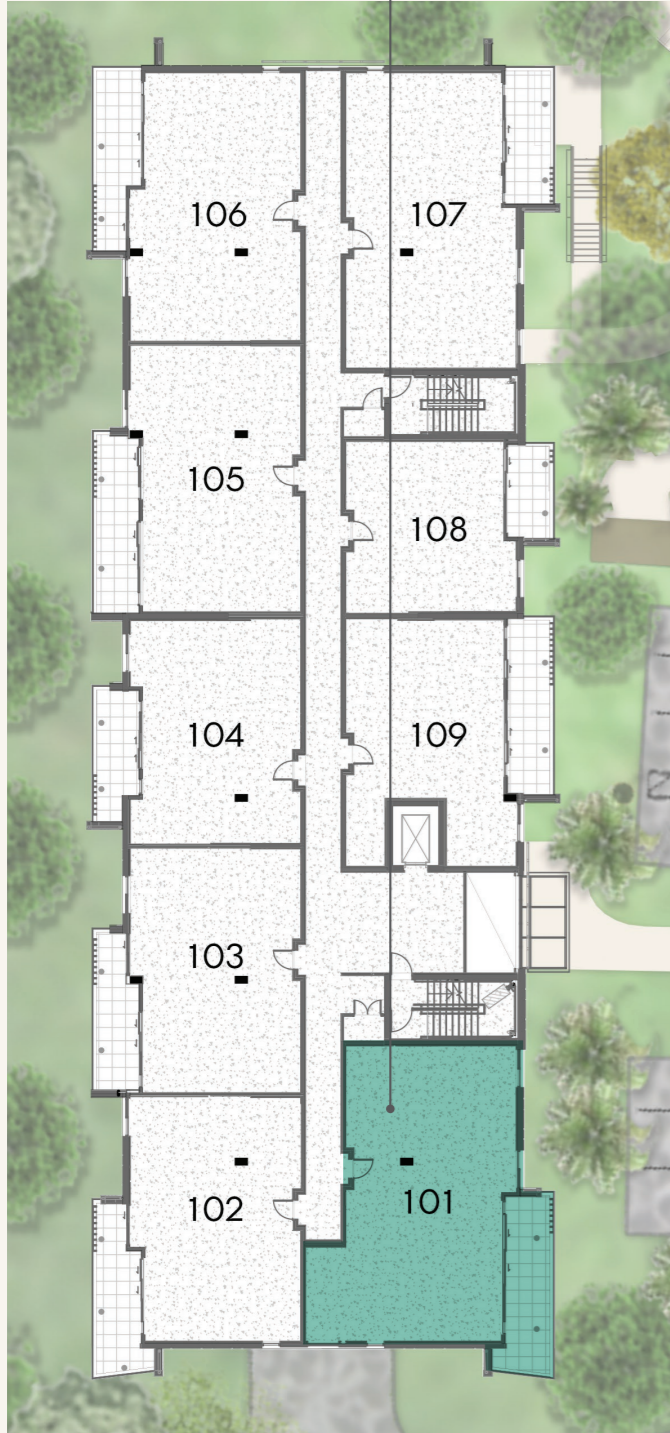
- Secure keyless entry
- Wireless connectivity
- MY LUMIN communications platform
- MY LUMIN duress call management 24/7
- Modern open plan Living
- Expansive outdoor living
- Master suite with high quality walk in wardrobe
- Fully tiled ensuite with underfloor heating
- Quality Fisher & Paykel appliances as standard
- Quality finishes including engineered kitchen benchtops
- Centrally located heat pump
- Includes window drapes
- Secure internal access garage

# THE BOTANIC

SILVERDALE



YOUR APARTMENT IS HERE



A3 Scale – 1:100  
\*Dimensions indicative